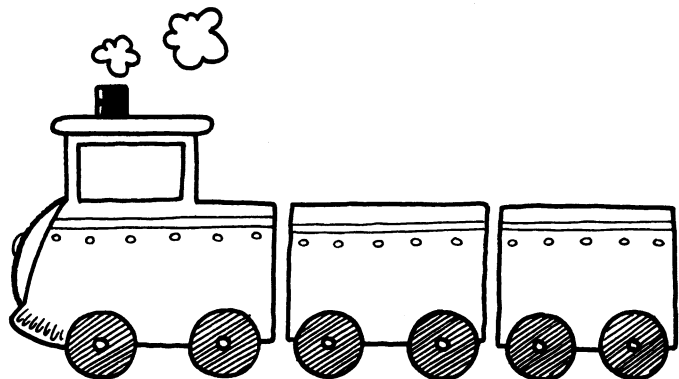
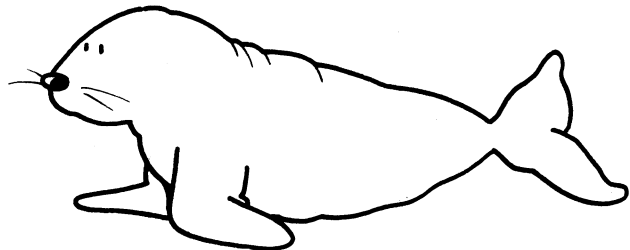
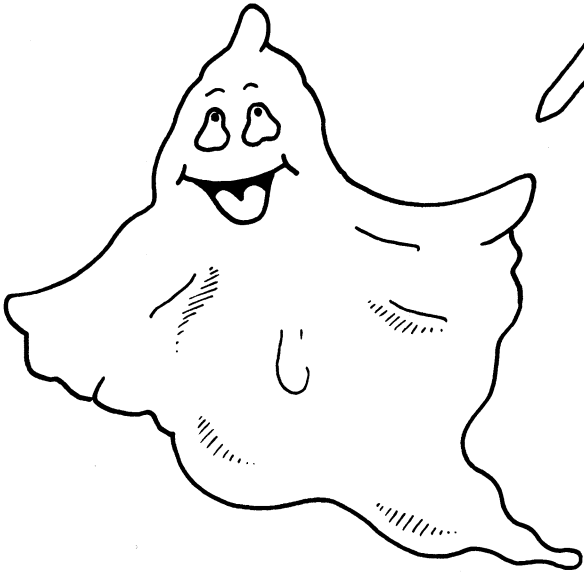
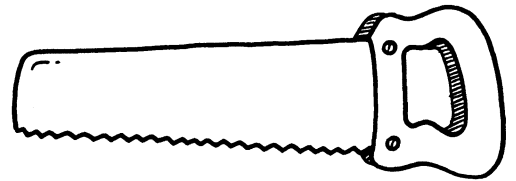
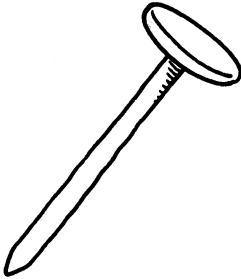
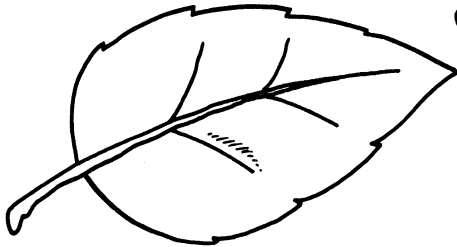
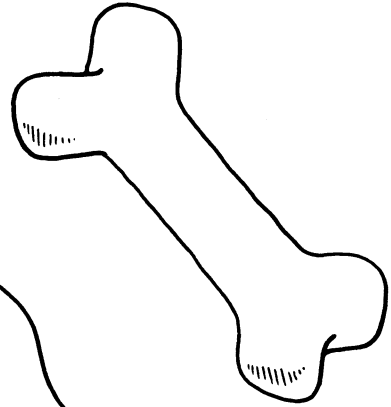
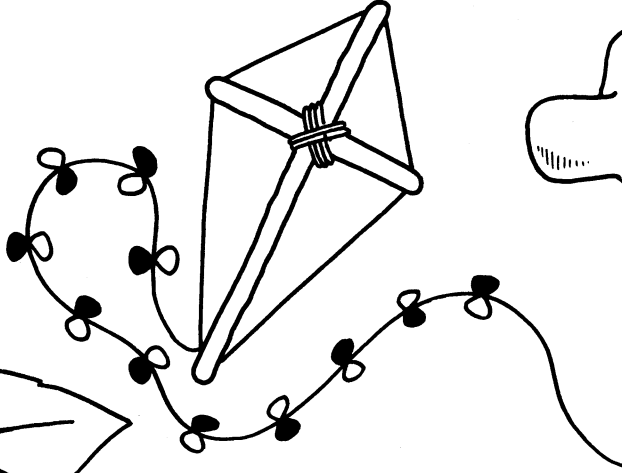


Partners

- Say the words.
- Join the pairs which have the same middle sound.



- Make up other word partners.

Teachers' Note Say a word whose dominant phoneme is easy to recognise, such as 'brown'. Write it and ask the children to repeat it. What is the main sound they notice (ow)? Tell them to listen to the words you say and to put up their hands when they hear a word with the same main sound as 'brown'.

Developing Literacy
Word Level Year R
© A & C Black