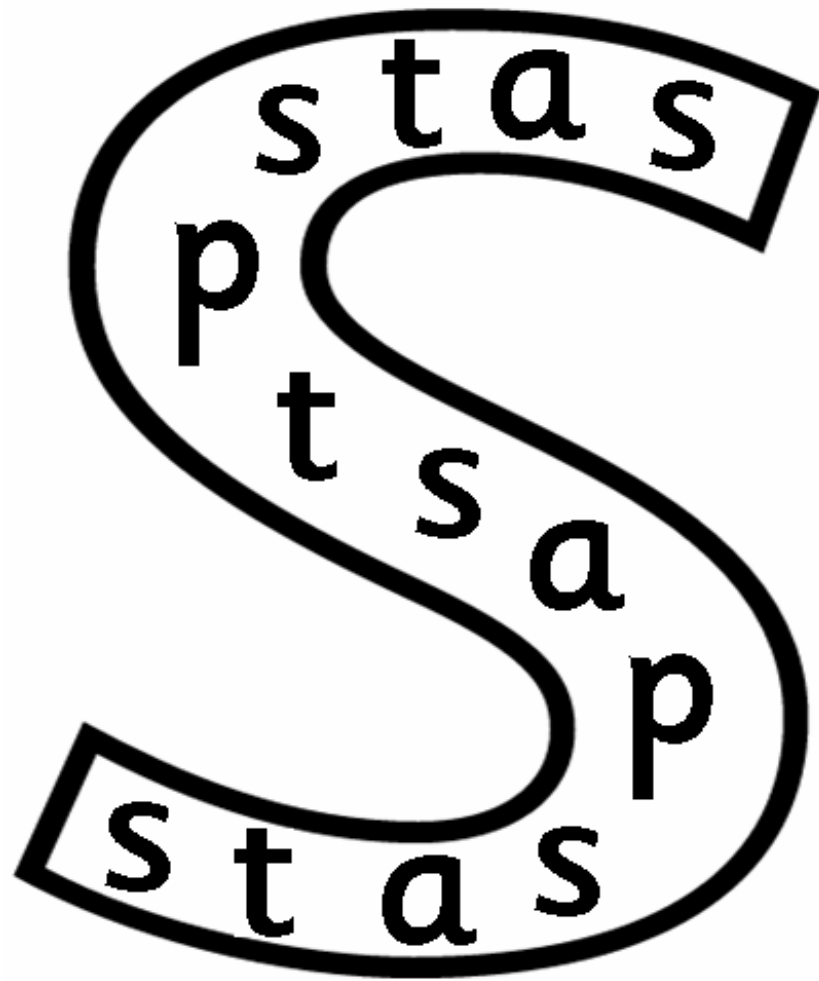


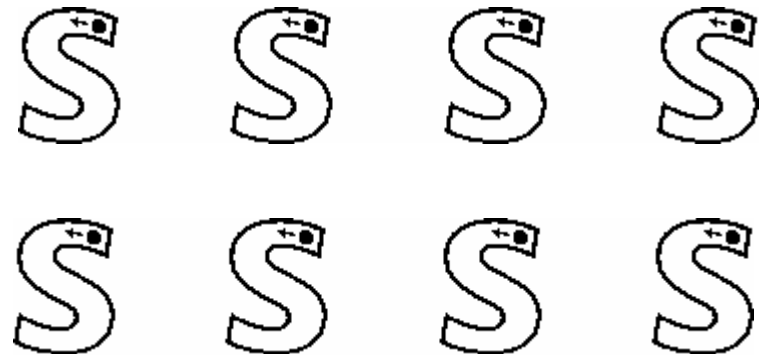
Circle and say the **S** sound.



Colour in the letter.



Draw inside the letter.



Trace over the dotted lines.

C C C C C C C C

S S S S S S S S

S S S S S S S S

S S S S S S S

Can you write **S** on your own?

S

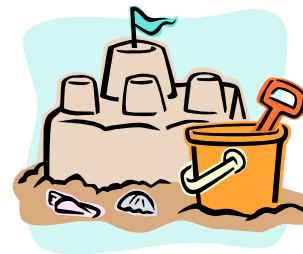
What starts with **S**?



sun



sad

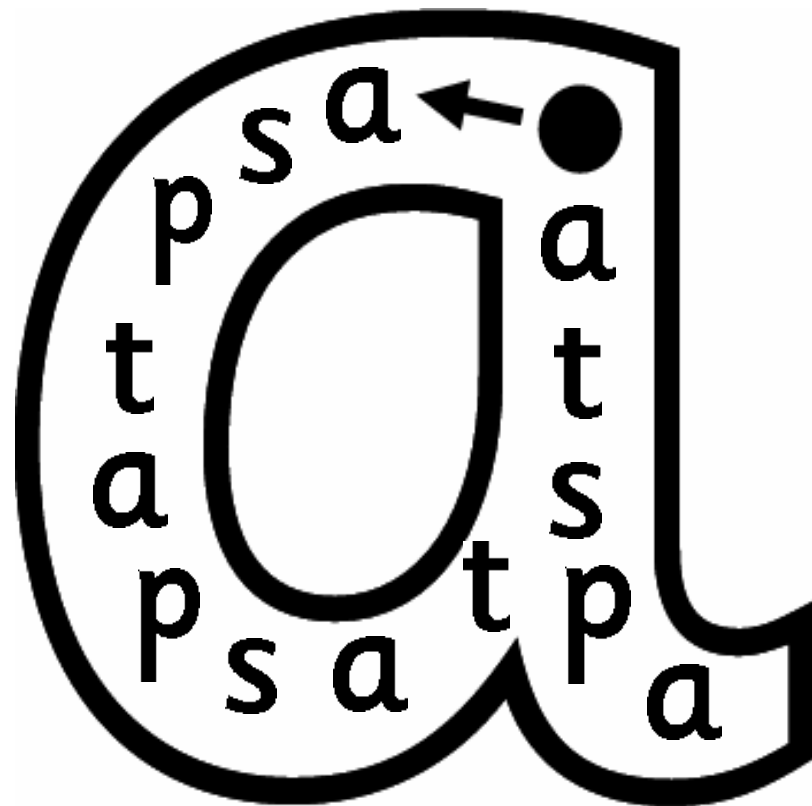


sand

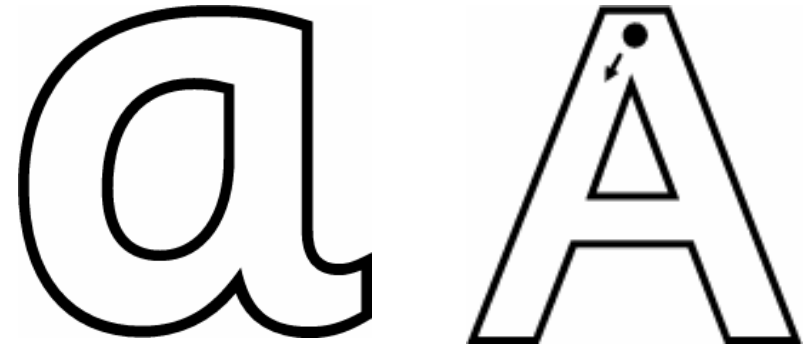


six

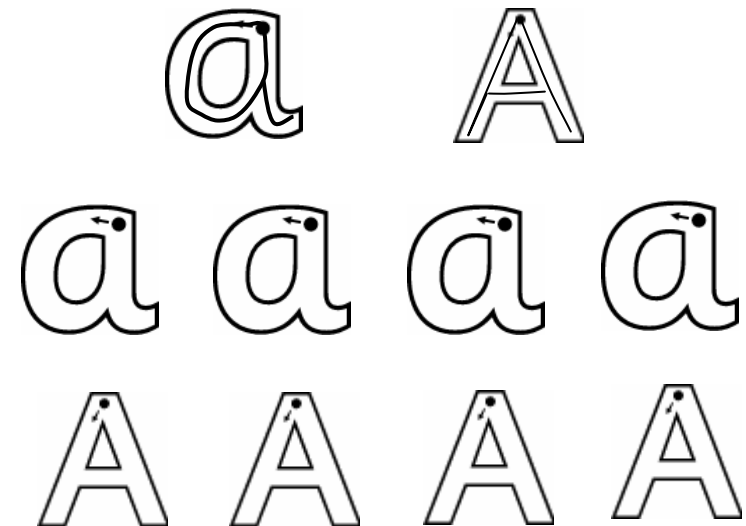
Circle and say the **a** sound.



Colour in the letter.



Draw a line inside the letter.



Trace over the dotted lines.

a a a a a a a a

a a a a a a a a

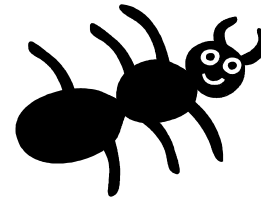
A A A A A A A

A A A A A A A

Can you write **a** on your own?

a

What starts with **a A**?



ant

2 + 1 add

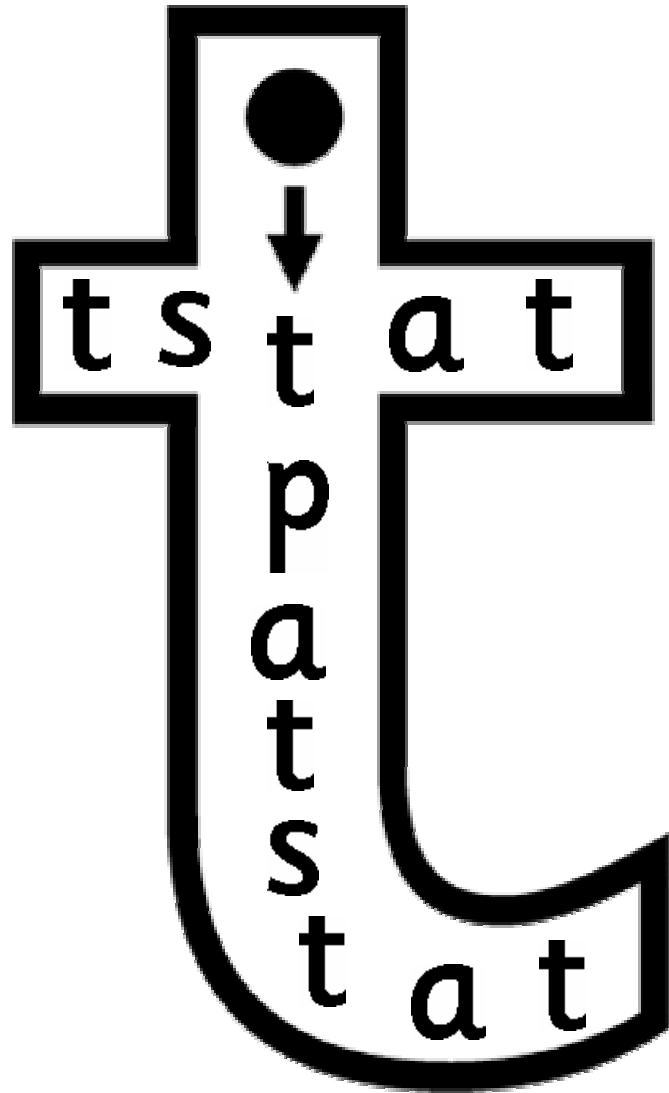


Africa

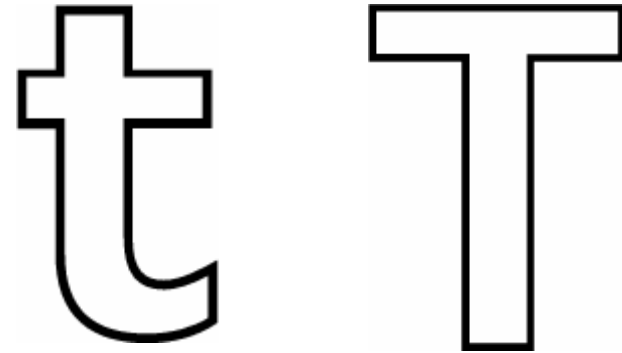


apple

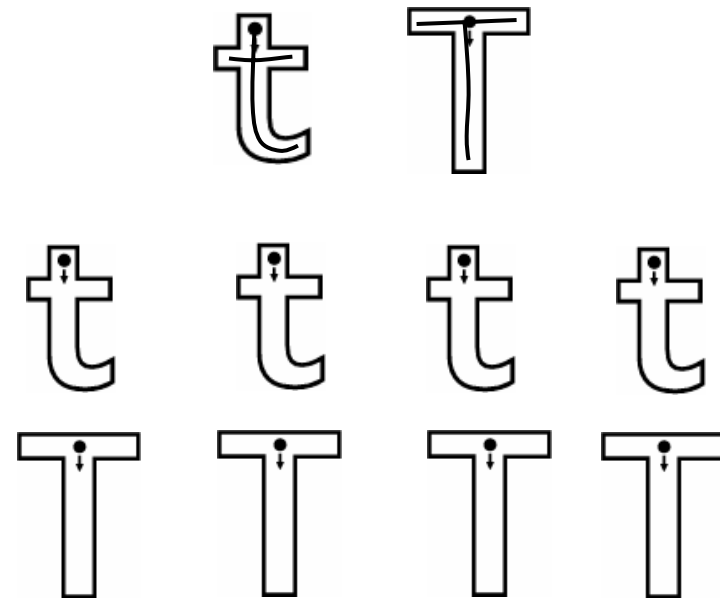
Circle and say the **t** sound.



Colour in the letter.



Draw a line inside the letter.



Trace over the dotted lines.

t t t t t t t t

t t t t t t t t

T T T T T T T T

T T T T T T T T

Can you write t on your own?

t

T

What starts with t T?



tap



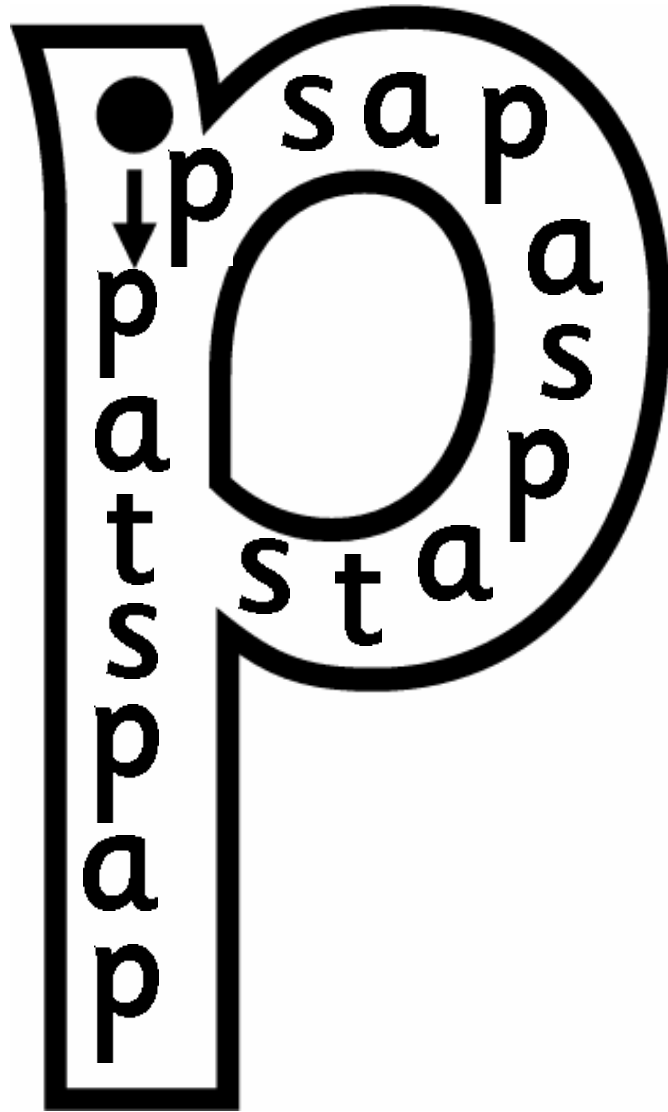
taxi



tin

10 ten

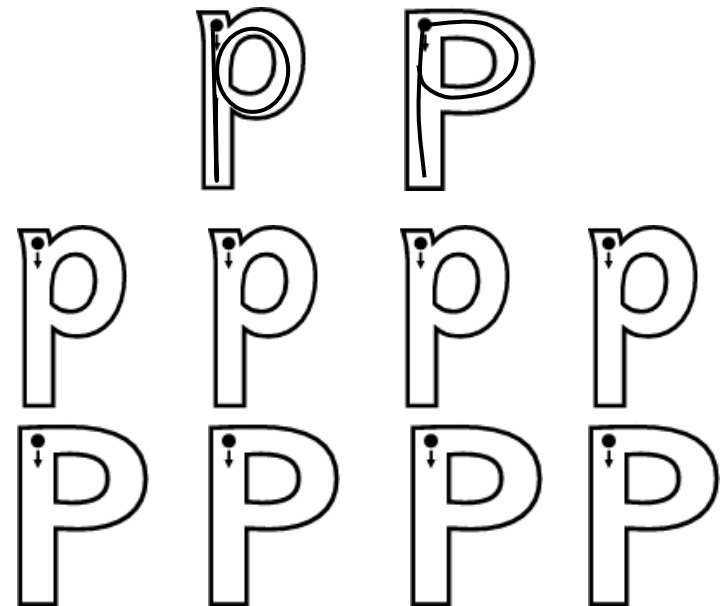
Circle and say the **p** sound.



Colour in the letter.



Draw a line inside the letter.



Trace over the dotted lines.

p p p p p p p p

p p p p p p p p

P P P P P P P P

P P P P P P P P

Can you write **p** on your own?

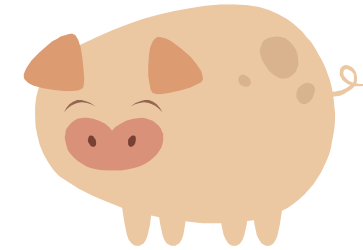
p

P

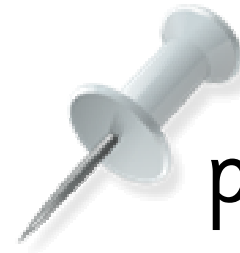
What starts with **p P**?



pen



pig



pin



panda